



VDI[®]

**More
than just a
diagnosis**



Cancer Management

A portfolio of tests for screening, diagnosing, managing and supporting cancer patients throughout their life. Offer more than just a yes/no/maybe diagnosis.

VDI Laboratory

The Right Tests for the Right Decisions[®]

www.vdilab.com

Utilizing Blood Tests

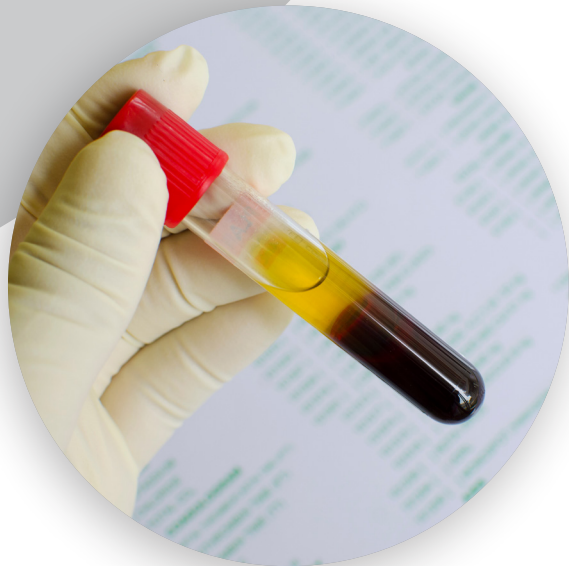
For cancer management

Cancer is a challenging subject for veterinarians, pet parents, and patients. Every case is unique, and the needs of each owner is going to dictate the direction of treatment and options available to them.

Blood tests act as tools to help manage these cases; from preventive care and screening for early detection, to diagnosis, and ultimately to treatment optimization and patient management. Your cancer management toolbox should offer more than a yes/no/maybe blood test.

VDI has developed a science-based portfolio over the last decade and half, designed to give you options for your cancer patients. A range of tests for nutritional support (before and after a diagnosis), screening for early detection, application-specific cancer diagnostics, therapeutic monitoring of confirmed cancer, and more.

Our commitment to low blood volumes, pricing that is reasonable for every case, and more options at your disposal, makes VDI's cancer management portfolio your best option to improve the outcomes in your patients.



Core Panels & Tests

Preventive & Screening

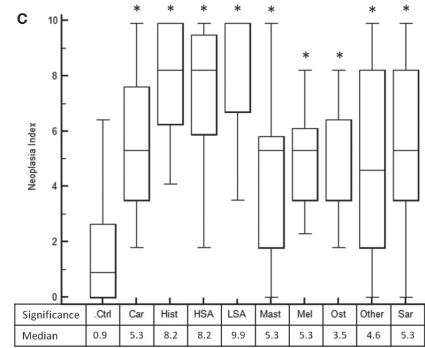
Panel:	Comments:
Essential Vitamins (Vitamin D, B12, Folate, Magnesium)	Diet is key to long term health, with poor nutrition leading to problems. Identify and correct these 4 nutrients which all have DNA/cancer-related roles in the body.
Cancer Risk Assessment	Early detection using a DNA proliferation marker and inflammation to determine if occult cancer is present or the patient is at elevated risk of a coming cancer event.
Inflammation Assessment	Chronic inflammation leads to the propagation of disease including cancer. Identifying and managing inflammation can improve long term outcomes in your patients.
Pre-Stem Cell Therapy Panel	Stem cells should not be given to patients with cancer. Screening for occult cancer before administering therapy can help avoid serious complications.

Diagnostic & Monitoring

Panel:	Number of Parameters	Sample Volume:	Use:
Cancer Panel - General	3	0.5mL	Diagnose cancer, evaluate therapy efficacy, and confirm remission or relapse.
Cancer Panel - Lymphoma	3	0.5mL	Same as the general cancer panel, but optimized for non-alimentary lymphoma.
Pericardial Effusion Panel	2	0.25mL x2	Evaluate if cancer is the cause of the pericardial effusion.
GI Lymphoma Panel	4	0.5mL	Diagnose and manage alimentary lymphoma, small or large cell. Differentiate IBD from GI LSA, evaluate gut status, and monitor therapy efficacy.
Advanced GI Panel	12+	1mL	Comprehensive GI workup which includes the GI Lymphoma Panel.

Cancer Types

VDI cancer panels are application specific and work on a wide variety of tumor types, both solid and hematological. By integrating multiple markers into a simple diagnostic (Neoplasia Index) good performance can be achieved.



What is the Neoplasia Index®
Neoplasia Index (NI) is an integration of multiple markers into a simple diagnostic index for cancer. 0 is a perfectly normal dog or cat, and 10 is a perfect score for cancer. A positive NI has a specificity of 0.90 with both specificity and sensitivity increasing as the index approaches 10. NI calculations are dependent on application so accurate test selection will improve performance.

Patient on steroids?

While pre-treatment samples are always preferred, it's not always practical. VDI cancer reports interpret results based on medication use that may influence results.

VDI reports are context-sensitive so be sure to indicate on the requisition form which medications, and for how long, to ensure proper interpretation. Any additional information provided will be reviewed and referenced as appropriate.

Clinical Studies & References:

The body of evidence for our primary cancer marker and inflammatory markers is robust and can be seen online at www.vdilab.com, or contact us for a digital copy. VDI continually engages in new clinical studies to improve and expand our portfolio of specialty blood testing.

Applications

Screening

Early Detection
Preventive Care
Pre-Stem Cell Therapy
Identify Areas of Risk

Diagnostic

ADR - Ain't Doin' Right
Suspicious Mass
Suspected LSA
Suspected Heart Cancer
IBD vs GI LSA

Monitoring

Disease Progression
Therapeutic Response
Metastatic Disease
Mass Removal
Recurrence & Relapse

In Practice

Prevent & SCREEN

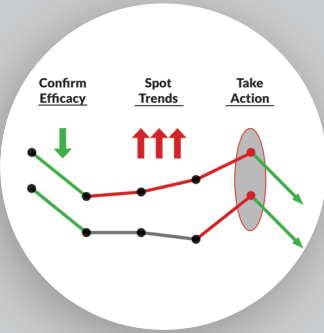
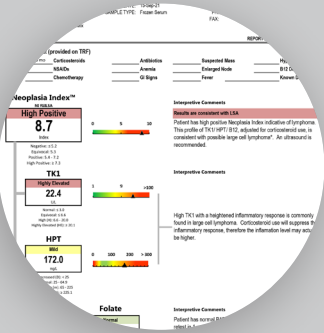
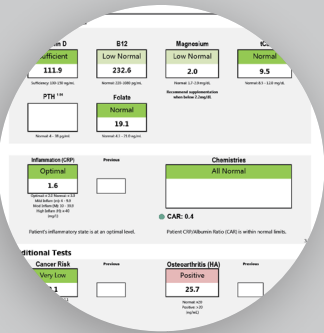
Cancer management starts before the onset of cancer. Early detection and preventive wellness plans continue to offer the best route to long-term health, and incorporating VDI's tests in your practice can help set the foundation for your patients.

Make the DIAGNOSIS

When cancer is suspected, utilize the application specific panels to rule-in neoplasia and set baselines for monitoring. Be sure to provide all the patient history to get context sensitive results for the most accurate interpretation.

Monitor the THERAPY

Once a diagnosis is made and a treatment plan is in place, use VDI's portfolio of tests to monitor the effectiveness of therapy, dial in supplementation, and assess the progression of disease. VDI offers case consultations at no charge.



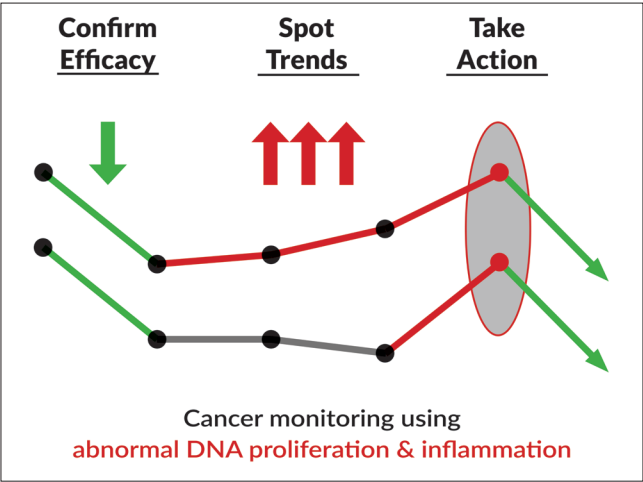
Cancer Management

Patient Monitoring

Cancer management starts before the diagnosis and continues after confirmation. Use VDI's portfolio to help manage your patients throughout their lives and achieve the best outcomes.

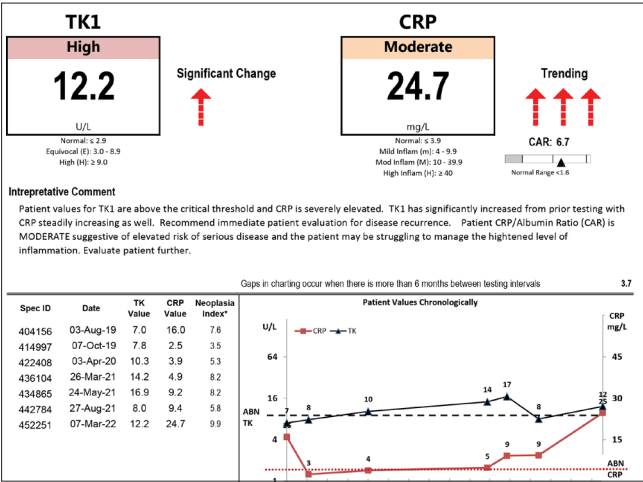
Biomarkers of disease activity

VDI's core markers reflect disease activity - making them excellent for monitoring disease progression or therapy efficacy. Most cancer therapy does one of two things: halt cellular proliferation or reduce inflammation. By utilizing markers measuring those two processes, you can quickly see if your therapy is working & make adjustments if not.



Time: the other “biomarker”

Time is a critical marker for monitoring disease. The change in disease biology over time is useful to understanding the patient status. Only with markers that respond quickly to this change can we fully utilize time, and VDI's panels take this into consideration to provide information on trending, significant changes, and offer retest windows.



Patient support with essential vitamins

Nutrition is paramount to health. Many key vitamins are only obtained from diet and are inadequate even in the healthy animal, let alone one with acute disease. Vitamins D, B12, Folate, and Magnesium all have functions related to cancer development or propagation. Low levels are often associated with active cancer.

Support your cancer patients by ensuring they have adequate levels of the essential vitamins. This is as easy as Test & Treat with VDI. We provide patient specific dosing guidelines, along with recommendations for products, to correct any deficiencies. Since most of these vitamins have anti-cancer functions in the body, it's best to start testing and correcting before the onset of disease.

Affordable & Achievable

Proper monitoring with blood tests requires the program to be affordable for the client, and achievable for the patient. VDI panels can be tested on very low sample volumes (<1mL of serum) at rates that are affordable for repeat testing multiple times. Cost and sample volume shouldn't be obstacles to successful patient monitoring.

Ready to learn more?

VDI schedules one-on-one webinars with you and your clinic to go over any of our services. Whether a full service overview or deep dives into specific areas, we're able to provide the education you need to get started implementing VDI services in your day-to-day practice.

The VDI difference

Get more when you test with VDI

Detailed Reports

VDI reports include interpretation of both the full panel and individual tests, and adjusts interpretation of results based on the clinical information provided on the Test Requisition Form. VDI provides more than just numbers on a page.

Context-Sensitive Interpretation

Every test result in a panel, whether normal or abnormal, influences the results analysis. VDI integrates patient context into report interpretation to make sure decisions are made based on the full clinical picture, not just numbers in isolation. It's like a case consultation without ever picking up the phone.

Consultations

VDI is always happy to discuss cases with you or your team at no charge. Need help determining the best panel or if a certain test will help? Want to discuss results in context to the full patient history? We're just an email or phone call away.

Product Recommendations

VDI works with industry partners to provide recommendations and access to quality products that have been proven effective. These include supplements, detox protocols, and nutraceuticals and are often integrated into related lab reports.

Answers – Not Results

Sometimes workups are challenging and lab tests don't always give a clear answer. In these cases, more information is needed, and VDI may offer a free retest to help get that additional info in order to provide answers, not just results.

Evolving Reports

Veterinary medicine continues to evolve with more technology and research. VDI strives to stay on top of this evolution to provide you test results in informative and accurate ways. Because of this, our reports often change to ensure we are providing the most current science possible.

Novel Tests & New Services

VDI continues to add novel tests to our portfolio - bringing new innovation to your diagnostic toolbox. We integrate these new markers, in combination with commonly run tests, to provide better services for under-served applications.

Patient-Specific Dosing Guidelines

Many VDI lab reports have patient-specific dosing guidelines to ensure proper supplementation. If a partner product is recommended, we convert the recommended dose to the product as well to simplify the instructions for pet parents.



More ways to work with VDI



Partnerships

VDI is always looking for synergistic partnerships. We work with a range of distributors, product manufacturers, and laboratories to constantly improve the service that VDI and our partners provide. Contact us for more information.



Clinical Studies & Research

Advancing the use of biomarkers in companion animals is a pillar of VDI's mission. Whether it is new biomarker development, application-specific clinical studies, or using our tests to validate a product or service, we're interested in helping.

Working with VDI

Testing Specifics

● Canine, Feline or Equine

Options for patients at any stage: Prevention, Detection, Management, Support

● Sample Requirements

Approximately 0.5-1.5 mL serum, separated into a non-additive tube (depending on panel). Stored & shipped frozen, or serum can be applied to a VDI dry serum test kit. Fasting recommended, but not required. Avoid hemolysis and lipemia.

● Sending Samples to VDI

Frozen Serum

Samples can be shipped frozen to VDI using styrofoam containers with freezer packs. Samples should be shipped overnight (VDI can provide discounted shipping) except on Fridays or before holidays. Multiple samples can be shipped together. Contact VDI for more details.

Dry Serum

VDI offers a special test kit called a Dry Serum Test Kit (DSTK) that allows for ambient temperature transport. Contact VDI for specifics about ordering and shipping samples using the DSTK to help reduce costs and provide additional stability to your samples.

● Receiving Results

VDI tests Monday thru Friday with reports typically within 24-48 hours of arrival at the lab. Results are uploaded to an online portal as well as emailed to the clinic. Sample reports available online.

● Setting Up an Account

Setting up an account with VDI is easy. There are no formal contracts and no minimum testing is required. Simply submit samples as needed and pay the invoices when they come. To set up an account head to www.vdilab.com and click [Get Started](#). Otherwise sending a sample to VDI using a VDI test requisition form establishes your account.

Contact Us

Address:

VDI Laboratory
9420 Topanga Cyn Blvd #100
Chatsworth, CA 91311 USA

Phone: 805-577-6742

E-mail: office@vdilab.com

Web: www.vdilab.com



VDI®